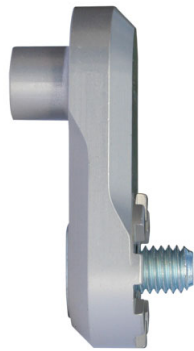


## Vario Plate (Adapter)



The Vario plate (adapter) is the part between the footpeg and the Vario footrest system (joint).  
You can see the complete footpeg lowering on pictures 2, 3 and 4.  
You need these 3 items! You can see matching footpegs and Vario footrest systems (joints) below.  
You cannot use the original footrest.

The Vario plate (adapter) is silver anodized and available in 3 lengths: 23 mm, 30 mm and 50 mm.  
We recommend 50 mm only for the pillion rider.  
Delivery: 1 set (for left and right).

<b>Art-Nr.: 051 00 00 23</b>	<b>51,90 EUR</b>
------------------------------	------------------

23 mm Vario Plate (for left and right)

<b>Art-Nr.: 051 00 00 30</b>	<b>51,90 EUR</b>
------------------------------	------------------

30 mm Vario Plate (for left and right)

<b>Art-Nr.: 051 00 00 50</b>	<b>53,90 EUR</b>
------------------------------	------------------

50 mm Vario Plate (for left and right)

Not allowed for the driver!

<b>Art-Nr.: 051000023-8</b>	<b>51,90 EUR</b>
-----------------------------	------------------

23 mm Vario Plate black (for left and right)

<b>Art-Nr.: 051000030-8</b>	<b>51,90 EUR</b>
-----------------------------	------------------

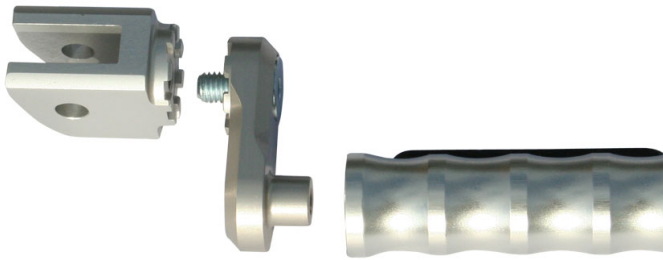
30 mm Vario Plate black (for left and right)

<b>Art-Nr.: 051000050-8</b>	<b>53,90 EUR</b>
-----------------------------	------------------

50 mm Vario Plate black (for left and right)

Not allowed for the driver!

Additional pictures:



051 00 00 23



051 00 00 30



051 00 00 50



051000023-8



051000030-8

051000050-8

